

# OLYMPUS®

Your Vision, Our Future

INVERTED MICROSCOPE

## CKX41/CKX31

**UIS2**  
World-leading optics

*A new advance in routine inspections*







## *Incorporation of advanced UIS2 optics ensures the highest level of clarity for cell checking applications.*

CKX series microscopes make cell checking quicker and easier than ever — because they are simple to operate, require minimal optical adjustments and capture the best possible observation images with outstanding efficiency.

Use of a tilting observation tube, which allows the user to make observations while standing, is an especially convenient feature.

In addition, the compact design allows installation right beside the incubator, improving safety and saving time spent on carrying specimens elsewhere for observation.

Multiple observation methods are supported, and the range of applications has been further increased.

The CKX series: designed to make routine cell checking quicker, easier and more efficient.

### **CKX31**

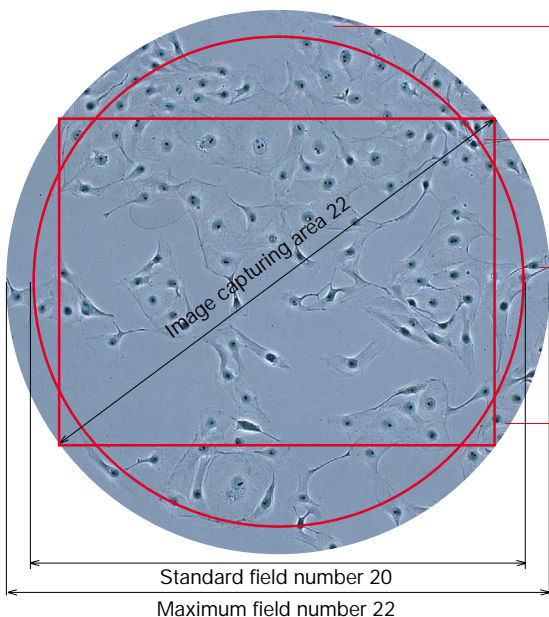
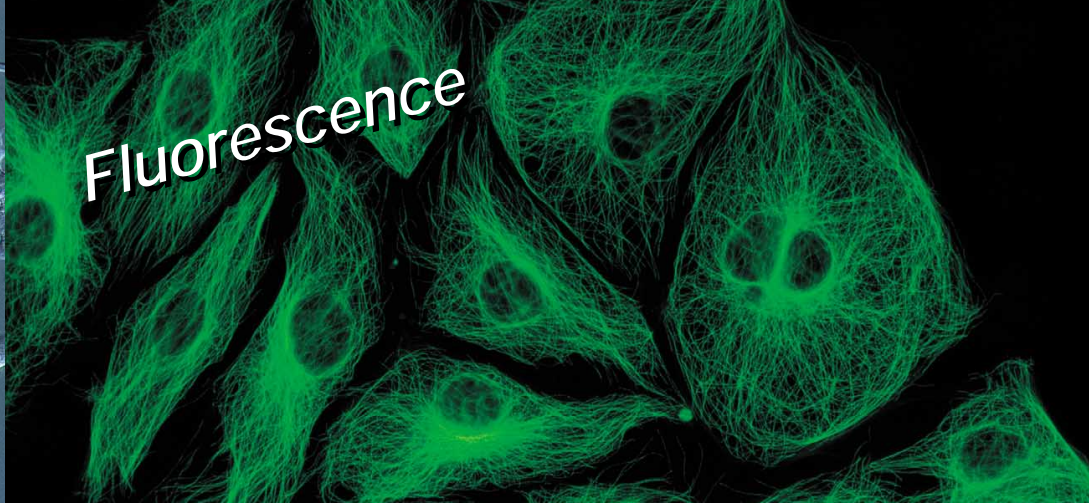
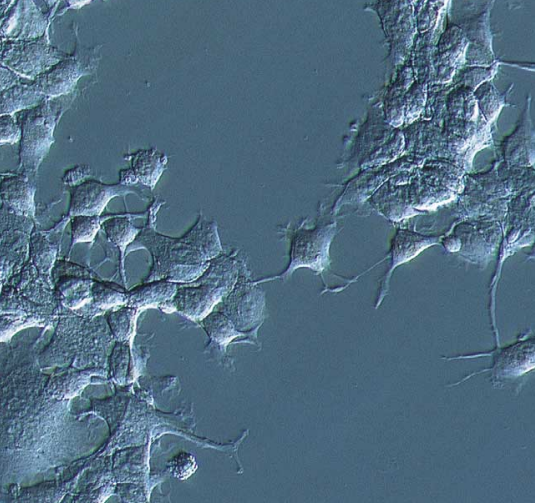
Standard microscope for cell culture observation with fixed binocular tube.



### **CKX41**

A binocular tilting tube, which allows observation while standing, and a trinocular observation tube which is compatible with various video cameras are available. Numerous accessories make it easy to upgrade the CKX41 according to need.





Clear, wide-ranging phase contrast observation.  
Ideal phase plate for cell culture.

Clear cell observation right to the edge of the container.  
PHC objective virtually unaffected by surface tension.

Low magnification UIS2 video adapters can be used for 0.25X, 0.35X, 0.5X and 0.63X magnifications, enabling clear display of the complete cell on the monitor.

Clear up to the edge of the view field.  
Flatness improved for 10 to 15%

### The UIS2 optics provide unsurpassed optical performance

The UIS2 optical system combines with the simplicity of the light path and the imaging excellence of a relay lenses to maintain the highest possible image intensity and to arrive at the highest optical correction level. Thanks to this feature, the UIS2 infinity-corrected optical system deliver unsurpassed resolution and contrast. In addition to improved image quality, the maximum field of view has been extended to F.N. 22. This allows the use of various observation tubes provided for upright microscopes (patented, CKX41 only).

### Enhanced clarity makes it easier to observe cell activity status

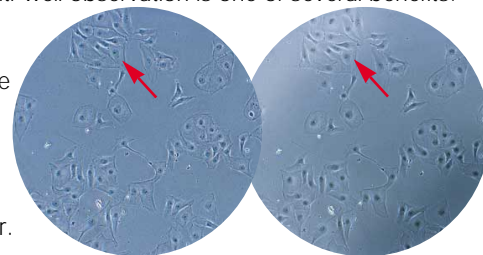
Incorporation of the world-renowned Olympus UIS2 optical system in the CKX series makes a dramatic improvement in flatness for 10 to 15% and enables very clear, high contrast images to be obtained up to the edge of the field view.

### Adoption of a UIS2 phase plate optimized for cell culture observation provides higher image contrast

The UIS2 phase plate adjusts the contrast according to the thickness of the cell culture, producing higher contrast images than those obtainable from conventional systems.

### PHC type objectives minimally affected by surface tension around the container edge (CPLN10XPH, CPLFLN10XPH, LCACHN20XPH)

The PHC type objectives are minimally affected by surface tension of the culture fluid, which can compromise clarity at the image periphery. Easier multi-well observation is one of several benefits. Combined with the improved flatness resulting from the use of UIS2 optics, this feature facilitates clear observation of cells even at the edge of the container.

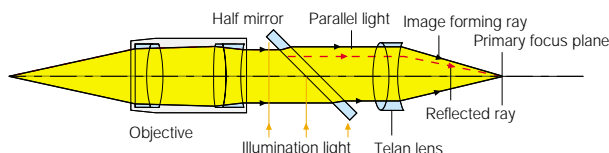


PHC objective

Standard objective

### UIS2 infinity-corrected optical system

The advanced Olympus UIS2 optical system maximized the advantages of infinity correction. Light travels through the body tube as parallel rays as it passes through the objective. These are focused by the tube lens to form a completely aberration-free intermediate image. Attachments can be added between the objective and the built-in tube lens in the observation tube without any magnification factor alterations to total magnification. Additional correction lenses are not required. The UIS2 optical system delivers optimum image quality with any configuration.





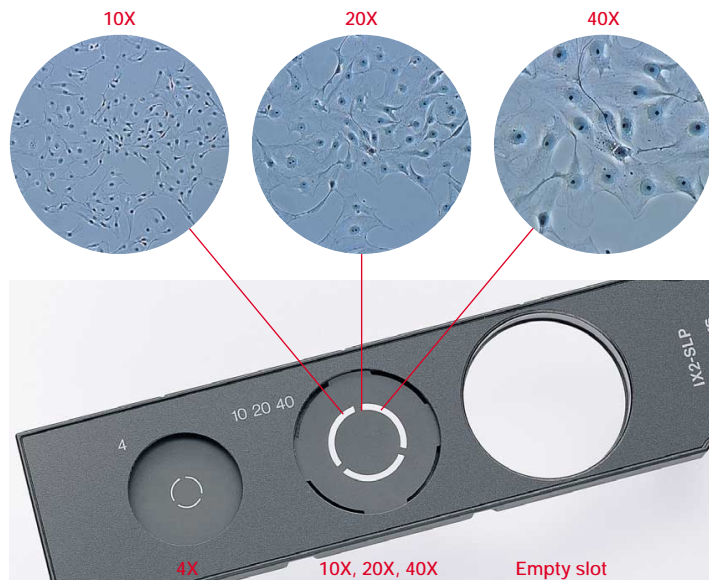


# *Just set the specimen on the stage and observe immediately while standing, with no optical adjustments.*

## **Pre-centered phase contrast slider for quick, adjustment-free observation**

With the pre-centered phase contrast slider, there is no need to repeat centering each time the objective magnification is changed. Likewise, ring slit exchange when swapping between objectives is also unnecessary, since the ring slit is standardized for 10X, 20X and 40X magnifications. The CKX series makes phase contrast observations quick and easy, without optical adjustments, for much more efficient performance of routine tasks. Since the phase plate transmission rates are dictated by the objective in use, the brightness remains constant even when the magnification is changed.

\*The IX2-SL with centering mechanism enables maximized phase contrast performance with precise optical adjustments.



## **Slim, compact design takes up minimum laboratory space**

The slim, compact design minimizes the depth of the microscope, allowing easy installation right beside the incubator or clean bench. Specimens can be taken and immediately set on the microscope stage for quick, efficient inspection.



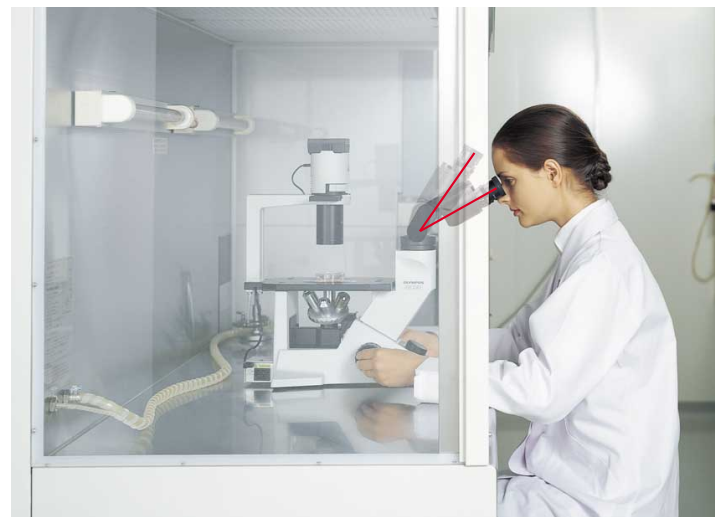
## **Tilting binocular tube for observation while standing**

The binocular tube has a 30-60 degree tilting mechanism to let the researcher make observations while standing. The specimen is removed from the incubator and placed straight onto the microscope stage, so that cell checking can be done immediately. "Quick observation, quick return"—that's the new style of routine inspection made possible by Olympus.



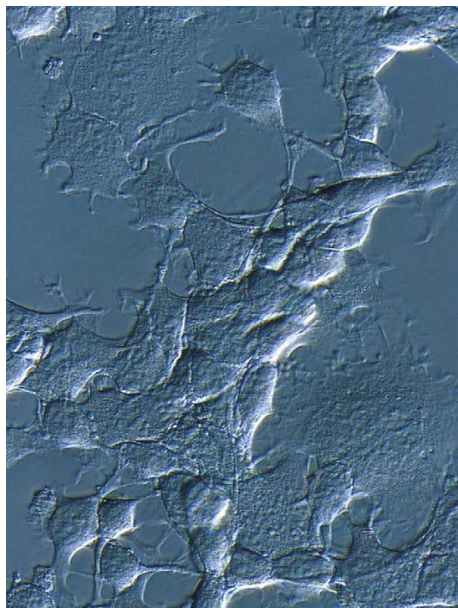
## **Easy observation at the clean bench**

The tilting binocular tube combination makes it unnecessary for researchers to adopt uncomfortable postures like lowering their face to the inside of the clean bench. Simply observe down the tube while working, and raise the tube afterwards: this method is much more convenient, since the clean bench can be opened/closed without moving the microscope.





# Relief contrast observations



## High-resolution relief contrast with N.A.0.5: thick specimens like egg cells can be observed in three dimensions

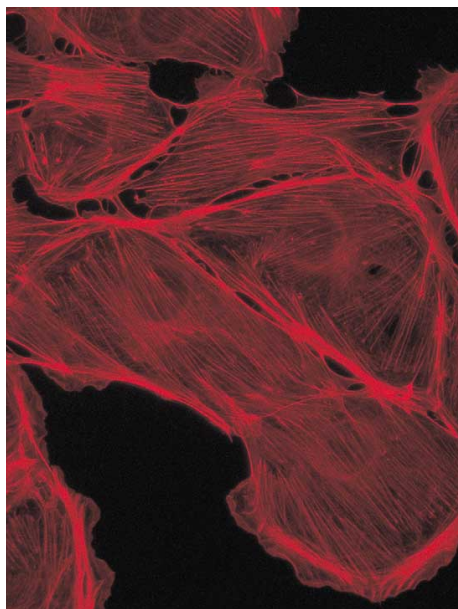
Olympus' relief contrast maintains the same shadow direction even if the magnification is changed. The two-stage exchange slider uses a common aperture for 20X and 40X magnifications, so exchange between 10X/20X and 10X/40X is performed quickly. The same feature enables easy optical adjustment: by simply using the lever, the contrast can be changed while centering is being performed.



## Vertical installation avoids interference with manipulators

Vertical installation helps the user to avoid accidentally touching the manipulators while operating the slider or making optical adjustments.

# Fluorescence observations



## Fluorescence observation system with tree-position allows the use of U excitation.

Adopted renowned UIS2 optics, this system provides B and G excitations and optionally U excitation as well. All three can be provided simultaneously, with quick, easy exchange among them. Many different UIS2 filters can also be installed, according to requirements, enabling this system to meet a wide range of fluorescence observations needs.

Also, thanks to newly developed fluorescent illuminator, which secured UV transmission rate, and a variety of UIS2 fluorescent objectives, clear and high contrast fluorescent images are provided.



# Accessories

## Suitable for hemacytometer holder and other kinds of micro-plate

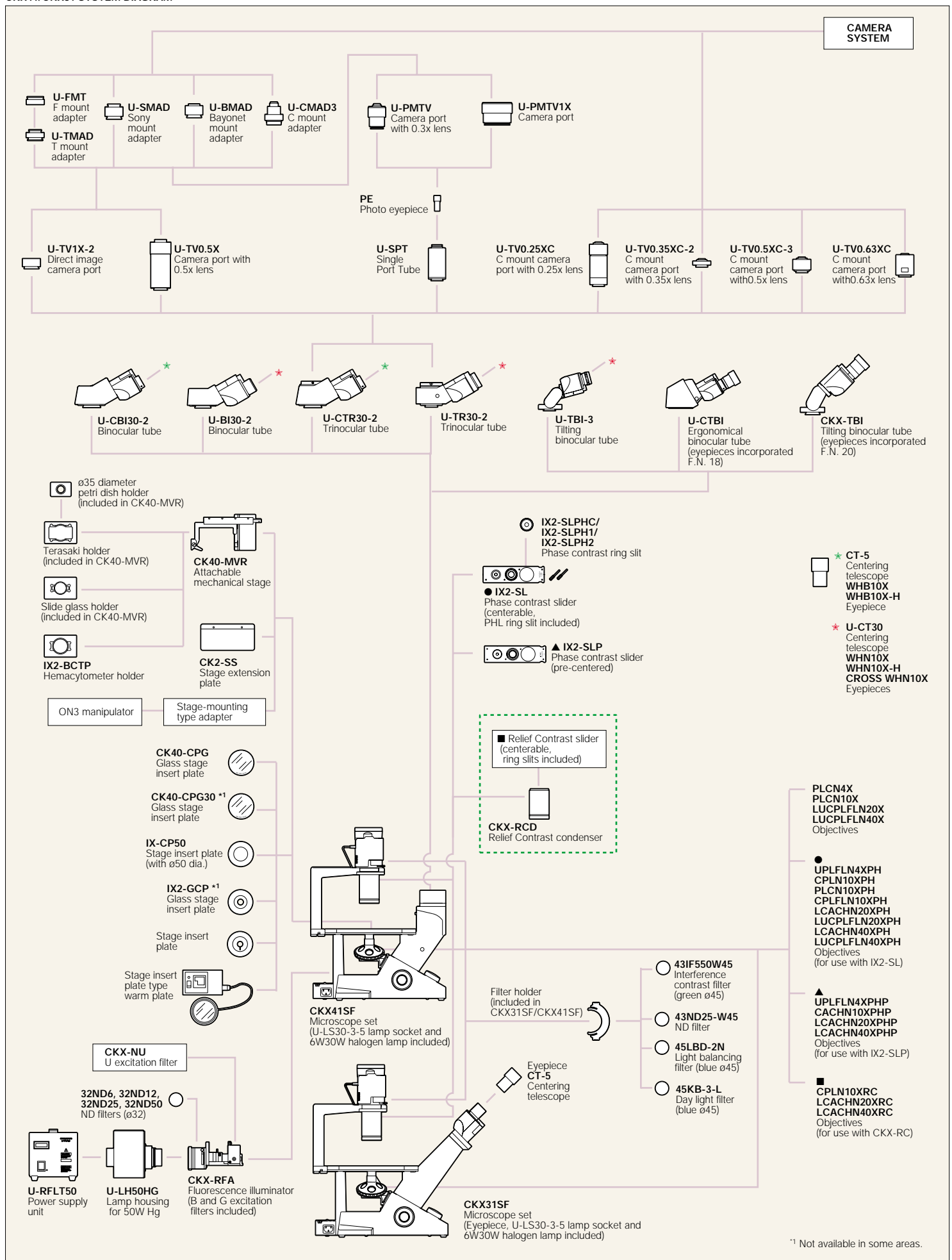
The mechanical stage offers excellent inspection performance with hemacytometer holders or other micro-



## Glass stage insert plate and warm plate

Also included are a glass stage insert plate, for simple confirmation of the objective in use, and a warm plate for easy temperature control (CKX41 only).





<sup>\*1</sup> Not available in some areas.

# CKX41/CKX31 specifications

Item		CKX41	CKX31	
Optical system		UIS2 (Universal Infinity-corrected) optical system		
Focus		Vertical nosepiece movement (stage is fixed), coaxial coarse and fine focus with tension adjustment mechanism, roller slide mechanism, stroke: 7mm up and 2mm down from focus position which is 1mm above the stage, stroke per rotation: 36.8mm (coarse), 0.2mm (fine)		
Revolving nosepiece		Quadruple		
Stage	Plain stage	160mm(L) x 250mm(W) Exchangeable insert plate (ø25mm opening) incorporated	ø35 petri dish holder stage incorporated	
	Mechanical stage	Right-hand low drive coaxial controls, stage movement: X=120mm, Y=78mm, with three dish/sample holders		
	Substage	70(L) X180(W)mm		
Illumination system	Light source	6V,30W halogen lamp, lamp socket (U-LS30-3-5), built-in frosted and heat absorbing filters, detachable illuminator		
	Filter holder	Insert up to 11mm thick with ø45mm filter, detachable		
	Aperture diaphragm	Lever type, range: from minimum ø3mm to maximum ø44mm		
	Slider insertion	With phase slider pocket and built-in slider position click stop mechanism		
Condenser		Detachable ultra-long working distance condenser (N.A. 0.3, W.D. 72mm)		
Contrast slider		●Pre-centered phase contrast: 4X, 10X/20X/40X, empty slot ●Centerable phase contrast: 4X, 10X/20X, empty slot (40X optional, pre-centered) ●Centerable for Relief Contrast: 10X, 20X, 40X		
Observation tube	Binocular tube	U-CB130-2: inclined 30°, interpupillary distance range: 48-75mm, diopter adjustment by helicoid on left sleeve (F.N. 20)	Fixed binocular tube, inclined 45°, interpupillary distance range: 48-75mm, diopter adjustment by helicoid on right sleeve	
		U-B130-2: inclined 30°, interpupillary distance range: 48-75mm, diopter adjustment by helicoid on left sleeve (F.N. 22)		
	Trinocular tube	U-CTR30-2: inclined 30°, ring dovetail attachment, interpupillary distance range: 48-75mm, tube length and diopter adjustment by helicoid on left sleeve Observation optical path: 50(binocular)/50(video port) (F.N. 20)	—	
		U-TR30-2: inclined 30°, ring dovetail attachment, interpupillary distance range: 48-75mm, tube length and diopter adjustment by helicoid on left sleeve Observation optical path: 50(binocular)/50(video port) (F.N. 22)		
	Tilting binocular tube	CKX-TBI: variable inclination angles from 30° to 60°, interpupillary distance range: 50-76mm, diopter adjustment by helicoid on right sleeve (F.N. 20)		
		U-CTBI: variable inclination angles from 30° to 60°, interpupillary distance range: 48-75mm, diopter adjustment by helicoid on right sleeve (F.N. 18)		
		U-TBI-3: variable inclination angles from 5° to 35°, circular mounting dovetail attachment, interpupillary distance range: 50-76mm, diopter adjustment by helicoid on right sleeve (F.N. 22)		
Fluorescent illuminator		Detachable illuminator, switchable slide (3-position: B excitation, G excitation, empty slot or U excitation)		
	FL light source FL light shutter FL field stop FL cubes	50W Hg Available Available 2 cubes (B & G), option U (cubes are not compatible with UIS2. Filter and dichroic mirror size are same as UIS2)		
	Filter	1 filter		
Eyepiece		For U-CB130-2/U-CTR30-2/CKX-TBI: WHB10X/WHB10X-H (F.N. 20) For U-B130-2/U-TR30-2/U-TBI-3: WHN10x/WHN10x-H/ CROSS WHN10x (F.N. 22)  For U-CTBI: (F.N. 18)	10X (F.N. 20)	
Power supply		Continuous intensity adjustment, built-in voltage changeover switch (100/120V, 220/240V), frequency 50/60Hz		

# UIS2 objectives \*1 specifications

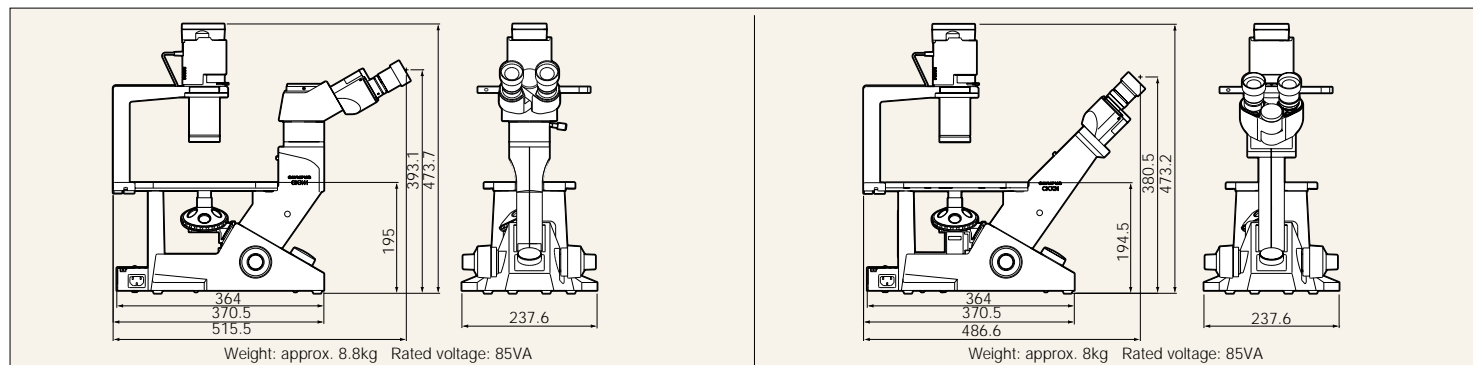
	Objective	N.A.	W.D.(mm)	Remarks
For brightfield	PLCN4X	0.10	18.5	
	PLCN10X	0.25	10.6	
	LUCPLFLN20X	0.45	6.6-7.8	
For phase contrast	LUCPLFLN40X	0.60	2.7-4	
	UPLFLN4XPH	0.13	16.4	PHL (for use with IX2-SL)
	CPLN10XPH	0.25	10	PHC (for use with IX2-SL)
	PLCN10XPH	0.25	10.6	PH1 (for use with IX2-SL)
	CPLFLN10XPH	0.3	9.5	PHC (for use with IX2-SL)
	LCACHN20XPH	0.40	3.2	PHC (for use with IX2-SL)
	LUCPLFLN20XPH	0.45	6.6-7.8	PH1 (for use with IX2-SL)
	LCACHN40XPH	0.55	2.2	PH2 (for use with IX2-SL)
	LUCPLFLN40XPH	0.6	3.0-4.2	PH2 (for use with IX2-SL)
	UPLFLN4XPHP*2	0.13	16.4	For use with IX2-SLP
	CACHN10XPHP*2	0.25	8.8	For use with IX2-SLP
	LCACHN20XPHP*2	0.40	3.2	For use with IX2-SLP
For RC	LCACHN40XPHP*2	0.55	2.2	For use with IX2-SLP
	CPLN10XRC	0.25	9.7	For use with CKX-RC
	LCACHN20XRC	0.4	2.8	For use with CKX-RC
For FL	LCACHN40XRC	0.55	1.9	For use with CKX-RC
	UPLFLN4X	0.13	17	U,B,G
	UPLFLN10X	0.3	10	U,B,G
	UPLFLN20X	0.5	2.1	U,B,G
	LUCPLFLN20X	0.45	6.6-7.8	U,B,G
	LUCPLFLN40X	0.6	2.7 - 4.0	U,B,G

\*1 Objective lenses are lead free.

\*2 Pre-centering objective

# CKX41/CKX31 dimensions

(unit: mm)



CKX41/31 are the environmental conscious products according to OLYMPUS's own standards.

Main features of OLYMPUS Eco-products are as follows.

- Lead-free and arsenic-free Eco-glass for optics, such as lenses and prisms.
- Exclusion of hexavalent chrome, mercury, lead and cadmium from metal materials and surface treatment of metal.
- Exclusion of lead solders.
- Adoption of cardboard for packing materials without styrene foam for promoting the recycling.

\* A definition of exclusion depends on olympus standard. Some accessories are inapplicable.

Please visit our web site for further information:

<http://www.olympus.co.jp/en/eco-products/>



ISO9001 Certification  
OLYMPUS CORPORATION Micro-Imaging System Division



ISO14001 Certification  
OLYMPUS CORPORATION Ina-Plant



ISO9001/ISO14001 Certification  
Olympus Optical Technology Philippines Inc.

OLYMPUS CORPORATION obtains ISO9001/ISO14001

ECO-PRODUCTS

Specifications are subject to change without any obligation on the part of the manufacturer.

**OLYMPUS**

[www.olympus.com](http://www.olympus.com)

**OLYMPUS CORPORATION**  
Shinjuku Monolith, 3-1, Nishi Shinjuku 2-chome, Shinjuku-ku, Tokyo, Japan  
**OLYMPUS LIFE AND MATERIAL SCIENCE EUROPA GMBH**  
Postfach 10 49 08, 20034, Hamburg, Germany  
**OLYMPUS AMERICA INC.**  
3500 Corporate Parkway, Center Valley, Pennsylvania 18034-0610, U.S.A.  
**OLYMPUS SINGAPORE PTE LTD.**  
491B River Valley Road, #12-01/04 Valley Point Office Tower, Singapore 248373  
**OLYMPUS AUSTRALIA PTY. LTD.**  
31 Gilbey Road, Mt. Waverley, VIC 3149, Melbourne, Australia.

**OLYMPUS LATIN AMERICA, INC.**  
5301 Blue Lagoon Drive, Suite 290 Miami, FL 33126, U.S.A.  
**OLYMPUS (BEIJING) SALES & SERVICE CO., LTD.**  
12-13F, NCI Tower, A12 Jianguomenwai Avenue, Chaoyang District, Beijing, 100022, China



This catalog is printed by environmentally-friendly waterless printing system with soy ink.

Printed in Japan M1500E-0706B